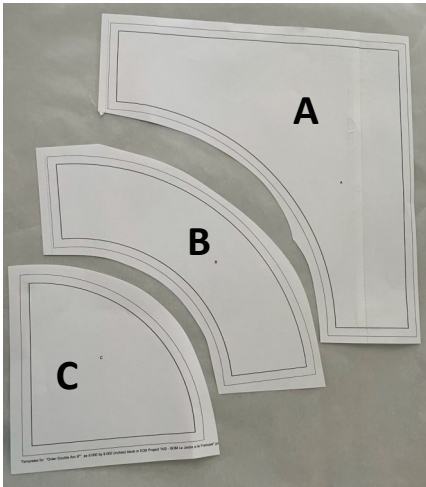


## Center Double Curves

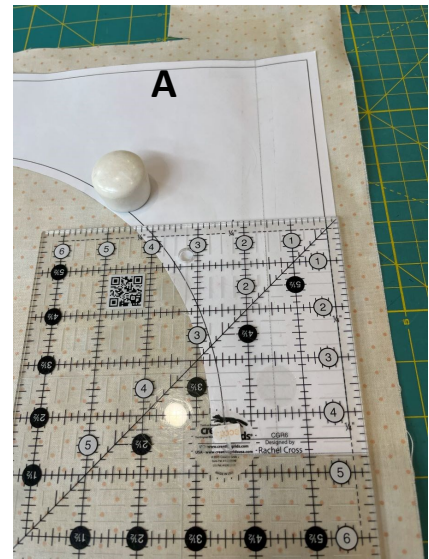
## All Sizes Make 4



1. Print your templates on cardstock. Follow the directions on the template printout to ensure your printer did not scale improperly the template size. Pay attention to the final measurement of Piece A that will be taped together.
2. Trim on the cutting line, not the seam line. It helps with cutting accuracy if you have the 1/4" seam allowance.
3. Tape together piece A, using the lineup dashed lines. Measure your finished template A to be sure each long edge is 9" from seam line to seam line.



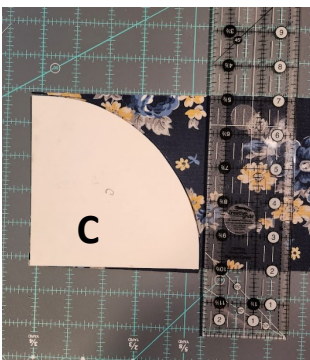
4. Note: Save these templates, you will reuse them in November for "Outer Double Curves"



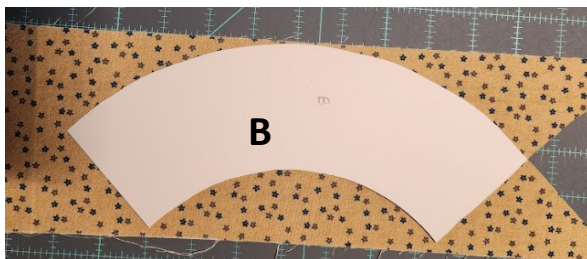
### Cutting out your pieces:

When cutting along a straight edge, you align your ruler 1/4" measurement with the 1/4" seam allowance on the template and then trim with rotary cutter. This insures your seam allowance stays consistent after multiple use of your template.

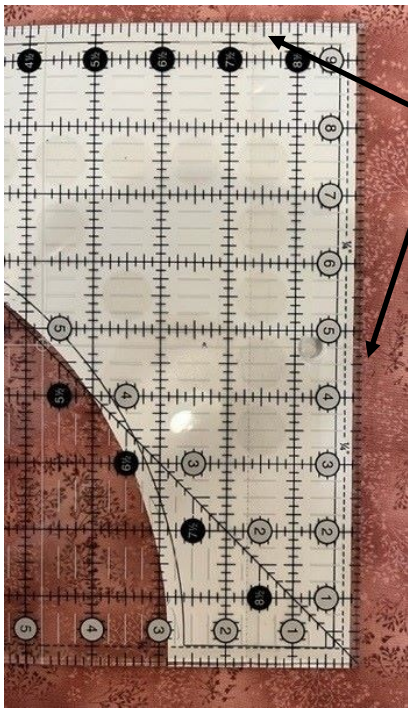
- 5) For Curves, you can draw a line along the template cutting line and cut with scissors or carefully with a small rotary cutter. A 28 mm works nicely on tight curves, the 45mm size does not.



- 6) Alternative for cutting small Center curve (C): Cut a 5" strip and square your corner. Placing the template in the 90 degree corner, cut the arc either with a small rotary cutter or draw a line and cut just inside the line. Just remember not to be short on the seam allowance of this piece as it has to line up properly to the Center Angle Block when assembled



- B) Cutting the Middle Curve (B): You can cut a strip 4 3/4" and lay the pieces as shown to cut it out.



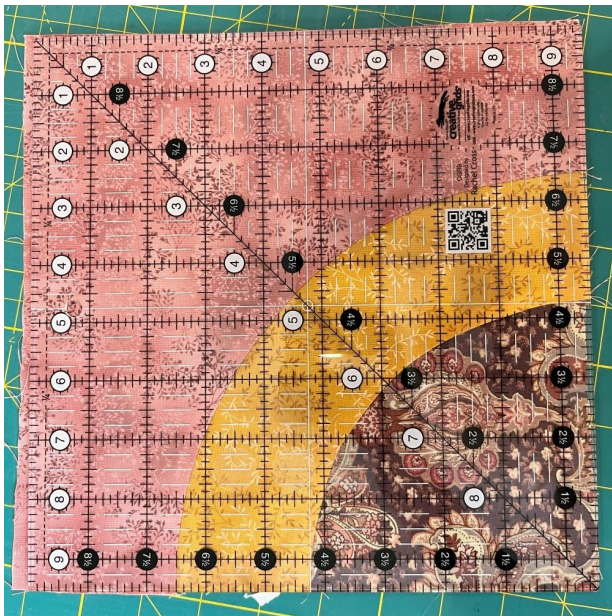
Cutting outside piece A. If you cut the 2 outside edges a little bit longer (placing seam line on ruler at least 1/2", instead of 1/4", you will have a little room to square up your piece when finished. The two outside pieces are the only places you can do this safely and maintain your inner curves so they line up with your other blocks during assembly.



Assembly, Use your favorite method or refer to *AISBOM Sewing Curves.pdf* Document.

Remember to sew Part B to C first.

Then attach B/C to the inner curve A.



Trim and square block. To 9 1/2" First check and trim any frayed edges from the inside corner out. The seam of piece A and B should measure 4 3/4" from inner corner. Accuracy at this place ensures your block lines up to the Center Angle Block seam when you assemble your quilt.

